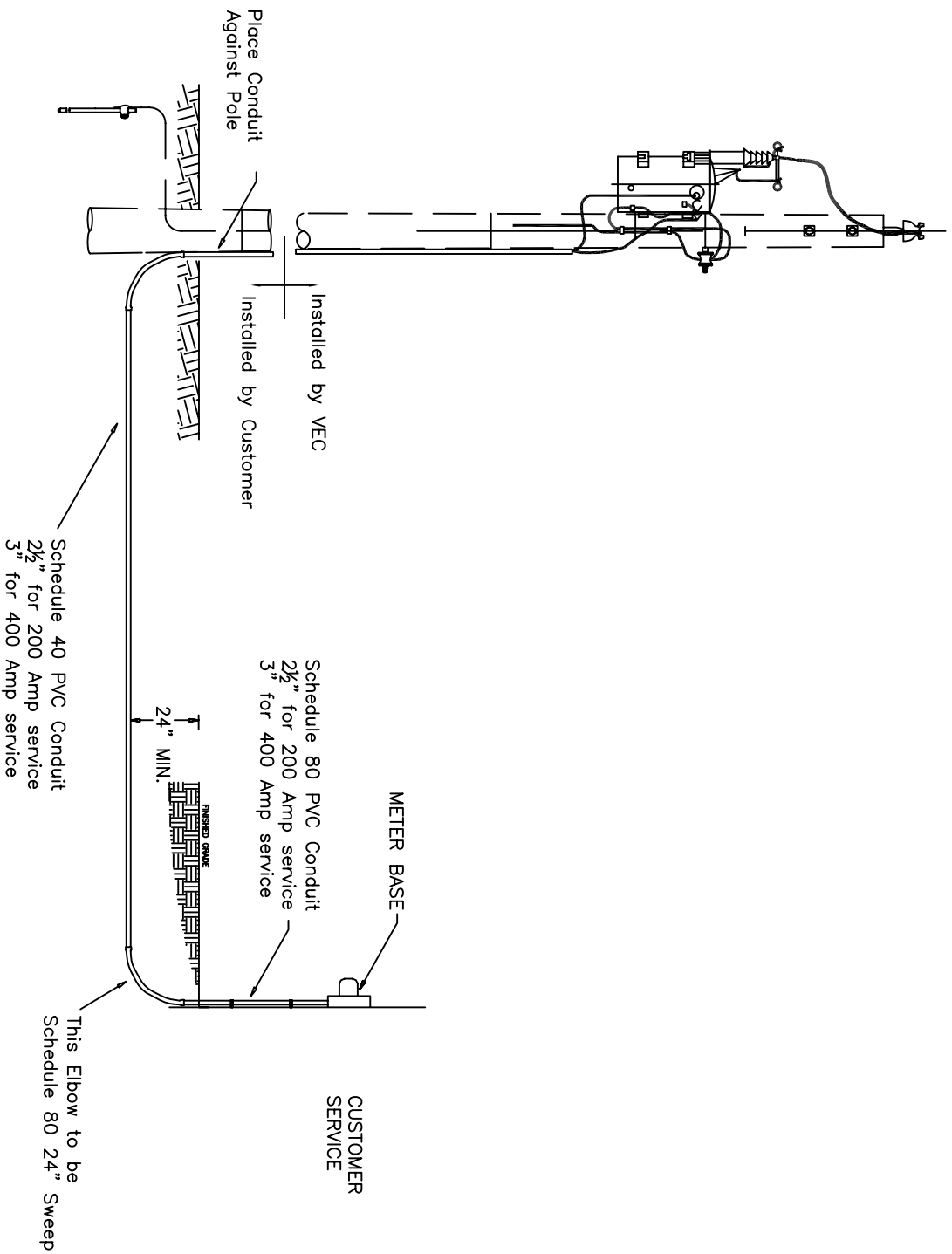


VEC PRIMARY POLE
WITH OVERHEAD TRANSFORMER



All Elbows to be Schedule 80 Long Sweep (36")
Unless Noted Otherwise

NOTES:

1. Customer responsibilities:

- ◆ Digging all trenches
 - ◆ Installing conduit
 - ◆ Installing necessary underground boxes furnished by VEC
2. VEC representative must inspect work before back filling can begin.
3. Marking tape (furnished by VEC) should be placed 12" above top of conduit.



Installation Guidelines
Underground Service with
Overhead Transformer

Revised
01/07/04

Drawn By
CKD